

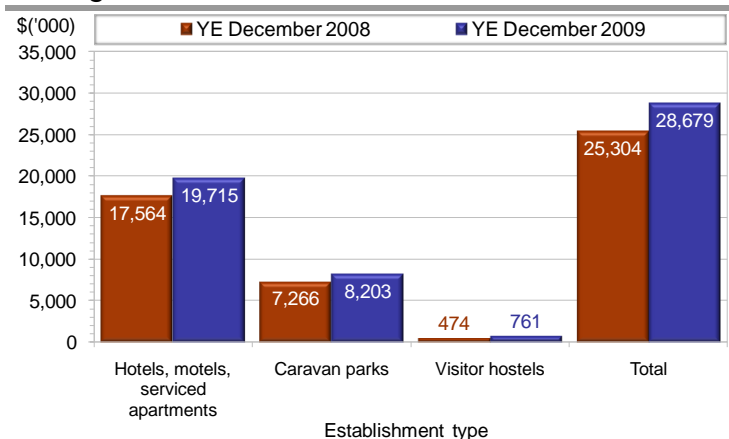
Total tourist accommodation

Establishments



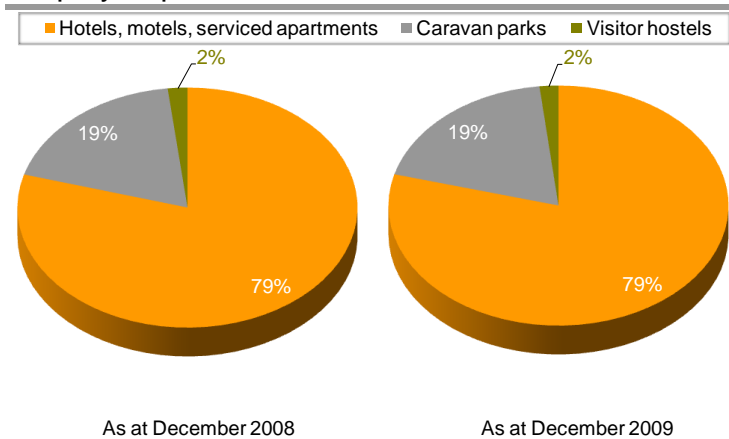
Mildura had 59 tourist accommodation establishments as at Dec 09 – unchanged on Dec 08. There were 35 ‘hotels, motels, serviced apartments’, which represented 59% of all tourist accommodation establishments.

Takings



Tourist accommodation establishments in Mildura received nearly \$28.7 million in takings during the YE Dec 09 - up by 13% on the YE Dec 08. Over \$19.7 million were received from ‘hotels, motels, serviced apartments’, which represented 69% of all takings from tourist accommodation.

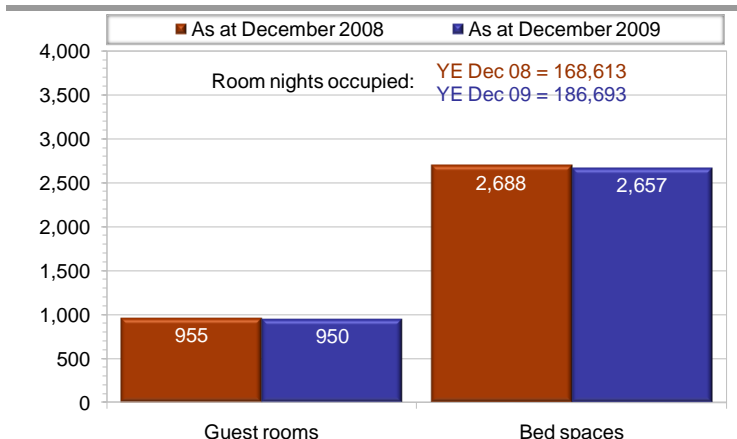
Employed persons



Mildura had 447 persons employed in tourist accommodation establishments as at Dec 09 - up by 4% on Dec 08. ‘Hotels, motels, serviced apartments’ accounted for 79% of employment in tourist accommodation establishments.

Hotels motels serviced apartments

Guest rooms



Hotels, motels and serviced apartments in Mildura had 950 guest rooms and 2,657 bed spaces as at Dec 09. The number of guest rooms and available bed spaces were down by 1% each on Dec 08.

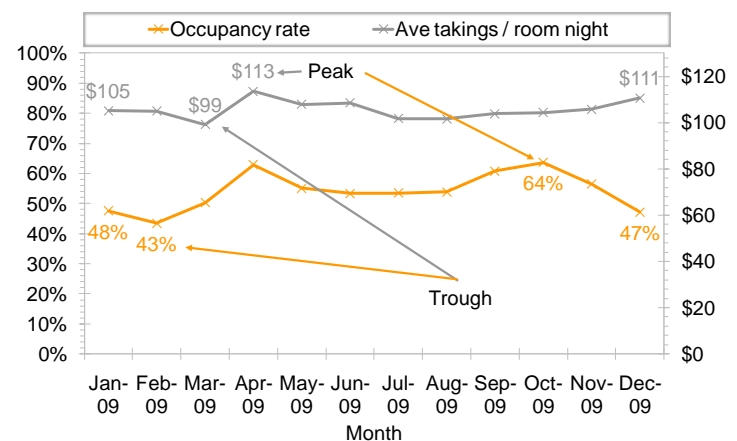
During the YE Dec 09, there were 186,693 room nights occupied - up by 11% on the YE Dec 08.

Guest arrivals

Mildura had 164,086 guest arrivals in hotels, motels and serviced apartments during the YE Dec 09, who stayed for 302,369 nights. The number of arrivals was up by 3% on the YE Dec 08, while nights were up by 11%.

Room occupancy rate and average takings

Mildura had an average room occupancy rate of 54% in hotels, motels and serviced apartments during the YE Dec 09 – up by 6% points on the YE Dec 08. The rate was 9% points higher than the annual average for regional Victoria.



During the last 12 months, the occupancy rate in Mildura peaked in October 2009 (64%) and was lowest in February 2009 (43%).

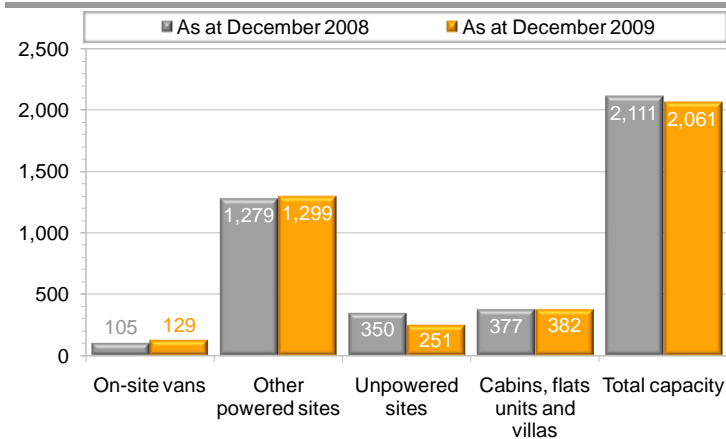
Hotels, motels and serviced apartments in Mildura took, on average, \$106 per room night occupied during the YE Dec 09 - up by 1% on the YE Dec 08. The average takings in Mildura were lower than the average for regional Victoria (\$119).

During the last 12 months, the average takings per room night occupied in Mildura were highest in April 2009 (\$113) and lowest in March 2009 (\$99).

Mildura is composed of Mildura (RC). Note: Percentage change figures provided in this report do not necessarily represent statistically significant change.

Caravan parks

Capacity

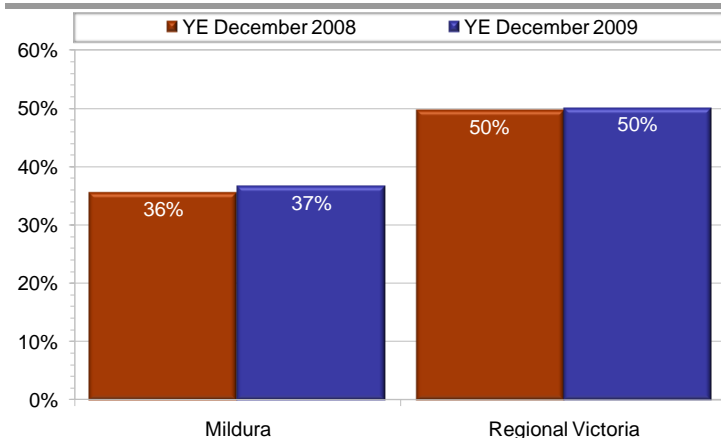


Mildura had a total capacity of 2,061 'on-site vans', 'other powered sites', 'unpowered sites' and 'cabins, flats, units and villas' as at Dec 09 – down by 2% on Dec 08. 'Other powered sites' represented 63% of the capacity.

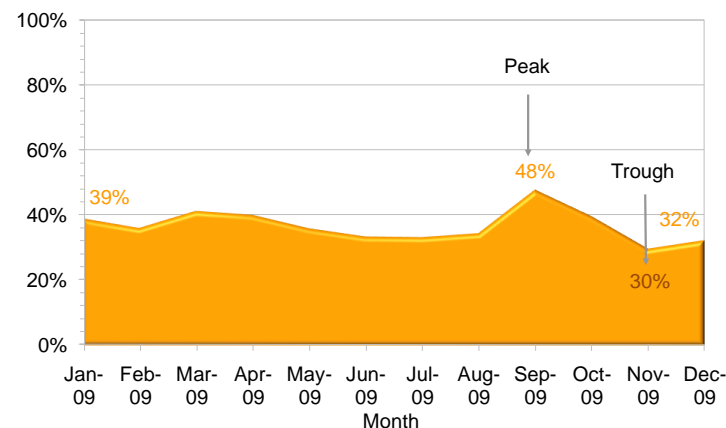
Site nights

Mildura had 277,496 site nights occupied in caravan parks in the YE Dec 09 - up by 2% on the YE Dec 08.

Site occupancy rate



Mildura had an average site occupancy rate of 37% in caravan parks during the YE Dec 09 – up by 1% point on the YE Dec 08. The rate was lower than the average for regional Victoria (50%).

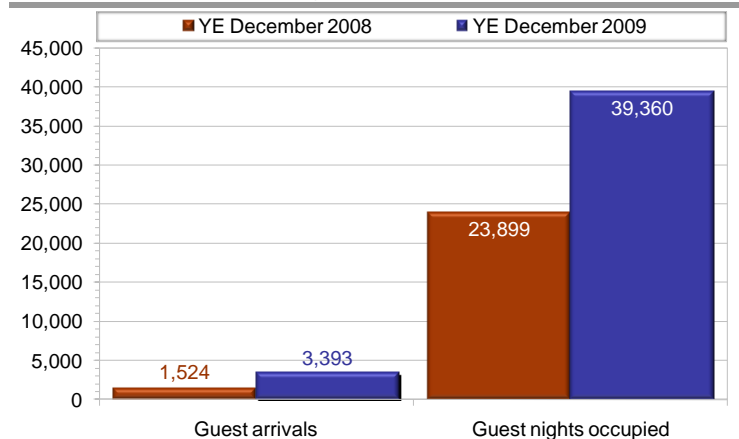


During the last 12 months, the site occupancy rate in caravan parks in Mildura peaked in September 2009 (48%) and was lowest in November 2009 (30%).

Mildura is composed of Mildura (RC). Note: Percentage change figures provided in this report do not necessarily represent statistically significant change.

Visitor hostels

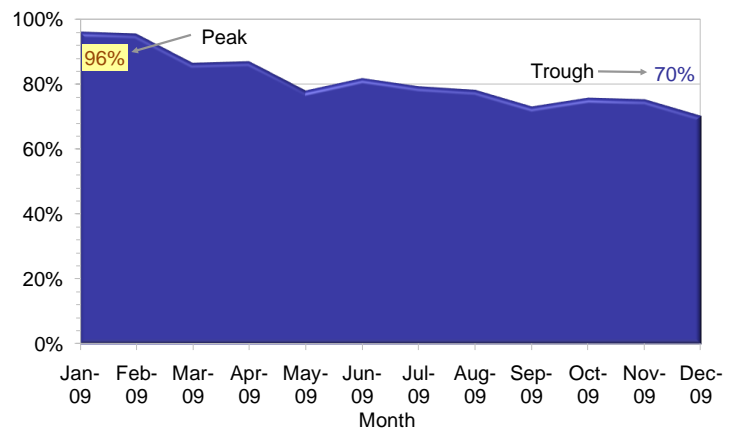
Guest arrivals and nights



Mildura had 3,393 guest arrivals in visitor hostels in the YE Dec 09, who stayed for 39,360 nights. The number of arrivals was up by 123% on YE Dec 08 and nights were up by 65%.

Bed occupancy rate

Mildura had an average bed occupancy rate of 81% in visitor hostels in the YE Dec 09 - up by 39% pts on the YE Dec 08. The rate was 59% pts higher than the average for regional Victoria.



During the last 12 months, the bed occupancy rate in visitor hostels in Mildura peaked in January 2009 (96%) and was lowest in December 2009 (70%).

Average length of stay

On average, guests stayed for 11.6 nights in Mildura in the YE Dec 09 - down by 4.1 nights on the YE Dec 08. The stay was 8.9 nights longer than the average for regional Victoria.

Explanatory notes

Hotels = licensed hotels and resorts with facilities, 5 or more room.

Motels and guest houses = motels, private hotels and guest houses with facilities, 5 or more rooms.

Serviced apartments = serviced apartments with 5 or more units.

Caravan parks = caravan parks with 40 or more powered sites.

Visitor hostels = visitor hostels with 25 or more bed spaces.

Takings from accommodation = include gross revenue from the provision of accommodation, including GST. Takings from meals are excluded. Where businesses are unable to provide the data inclusive of GST, it is automatically adjusted by the Australian Bureau of Statistics prior to aggregation and release in output.